



August 2022



BUILDINGHOPE
SUMMIT COUNTY

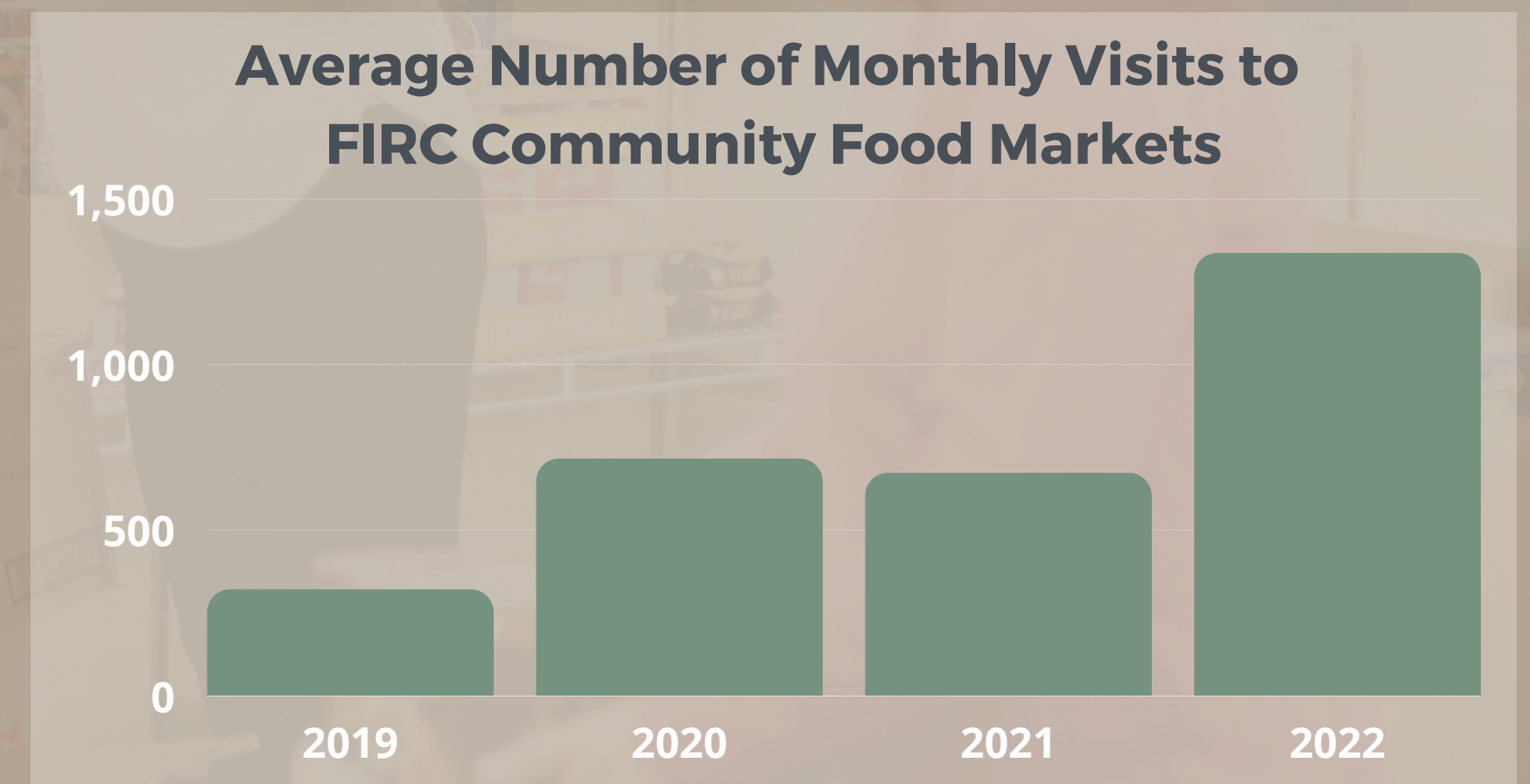
FIRC Family & Intercultural
Resource Center

Care. Collaboration. Community.

With a high cost of living and low wages, lack of housing and prevalence of poor mental health and party culture, **Summit County is a challenging place to live.** Research by the Center on Law & Policy show that one in four local households earn under the Self-Sufficiency Standard. Yet the majority of households (93%) who use our services earn below this Standard and cannot afford their basic needs or save for emergencies, without help.

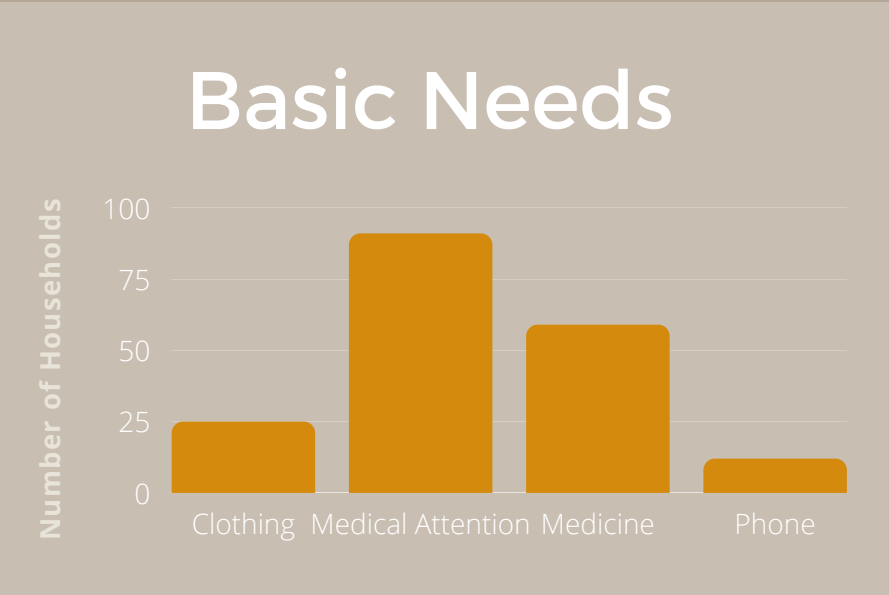
As Summit County's primary human services and mental health organizations, the Family & Intercultural Resource Center (FIRC) and Building Hope support **one in four Summit County residents** in meeting their basic needs of food, housing, income, education, medical and mental health care, and social support.

Increased debt and depleted savings, rising rent prices, a worsening housing crisis, lack of childcare options, and inflation leave our workforce stressed and strained. In response, we increased food and economic resources for the community, as well as wrap-around supports. **Demand for food and housing resources are 1.5 times higher** than pre-pandemic.

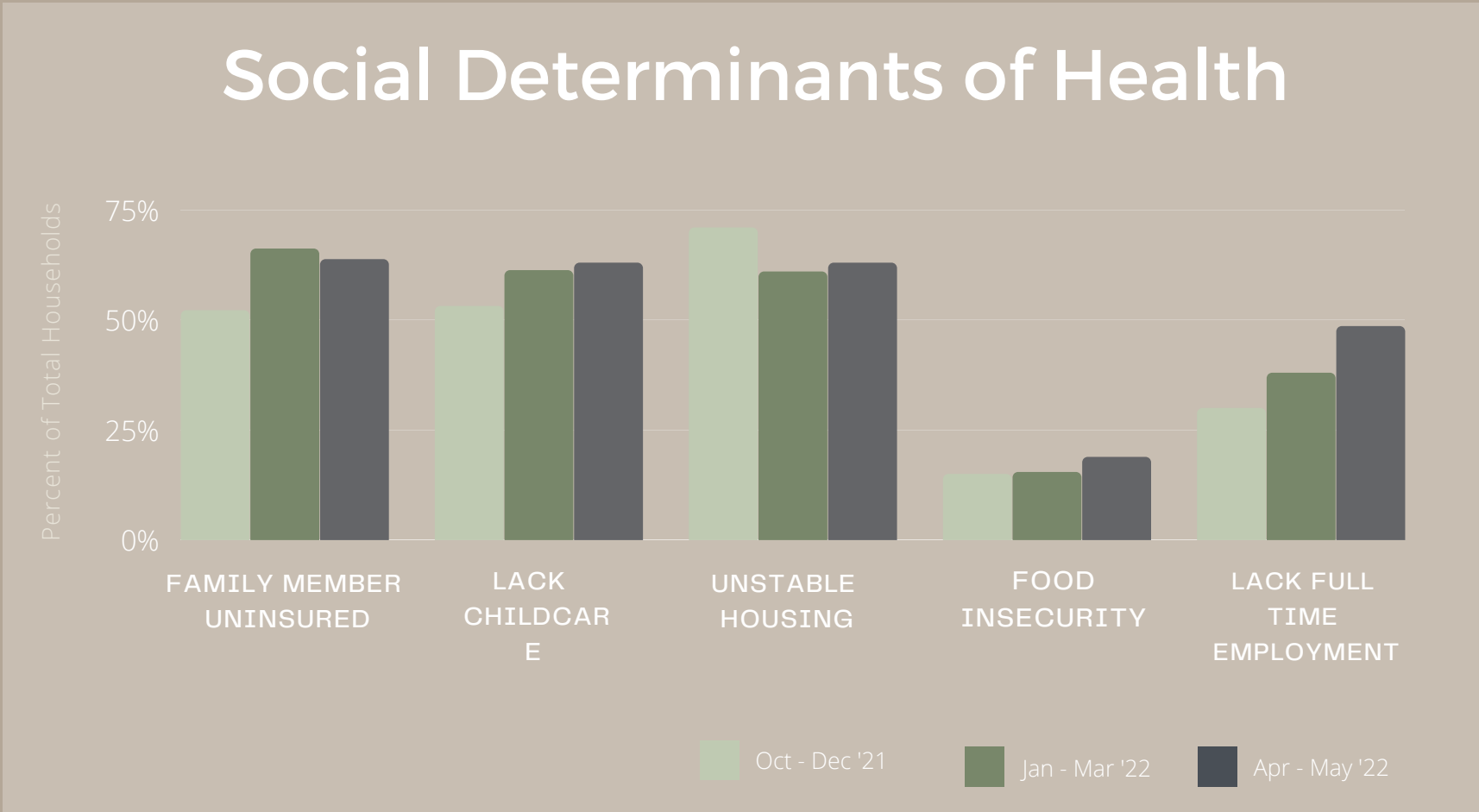


Care. Collaboration. Community.

ONE IN TWO
HOUSEHOLDS SEEKING
SUPPORT CAN'T MEET
THEIR BASIC NEEDS OF
INSURANCE, MEDICINE,
CHILDCARE, OR STABLE
HOUSING



While many Summit County residents seek out mental health and social support services; stigma, high uninsured rates, lack of knowledge of resources, and cost remain barriers. The Sol Center will pair robust mental health services with social determinant of health resources, thereby reducing barriers and promoting strong, healthy families.



FIRC clients and shoppers experience food insecurity at twice the rate of Summit County residents as a whole (Feeding America); with single parents, people of color, and young adults facing even higher rates of this health disparity.

Care. Collaboration. Community.



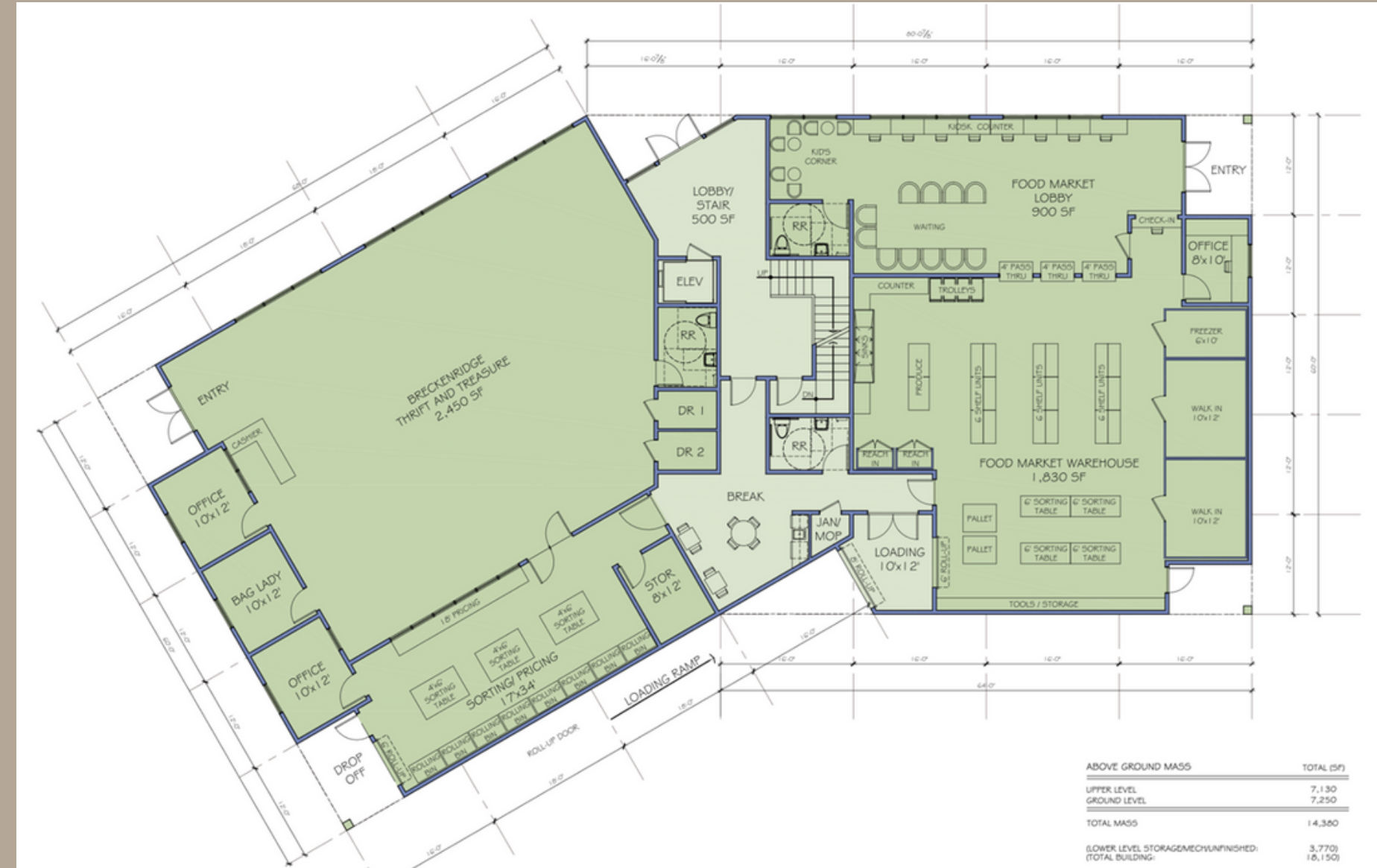
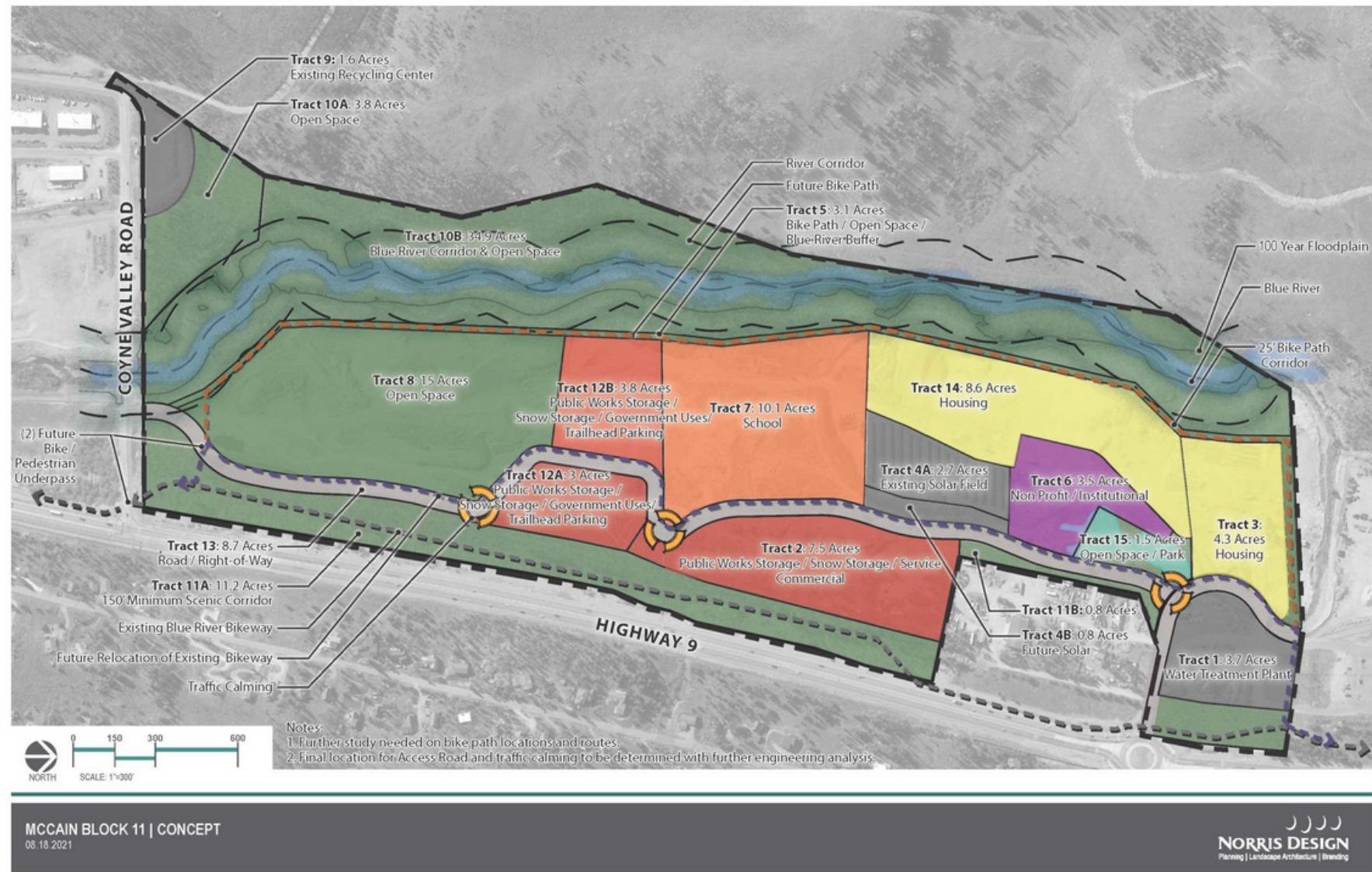
While many Summit County residents seek out mental health support; stigma, confidence, knowledge of resources, and cost remain barriers. The Sol Center will pair robust mental health services with social determinant of health resources, thereby reducing barriers and promoting strong, healthy families.

The Sol Center will be located near Farmer's Corner within the 250 unit Alta Verde workforce housing community. The 18,150 square foot building will house a Thrift Store, Community Food Market, and offices for FIRC and Building Hope staff. Two in three clients already live and/or work on the south side of the county.

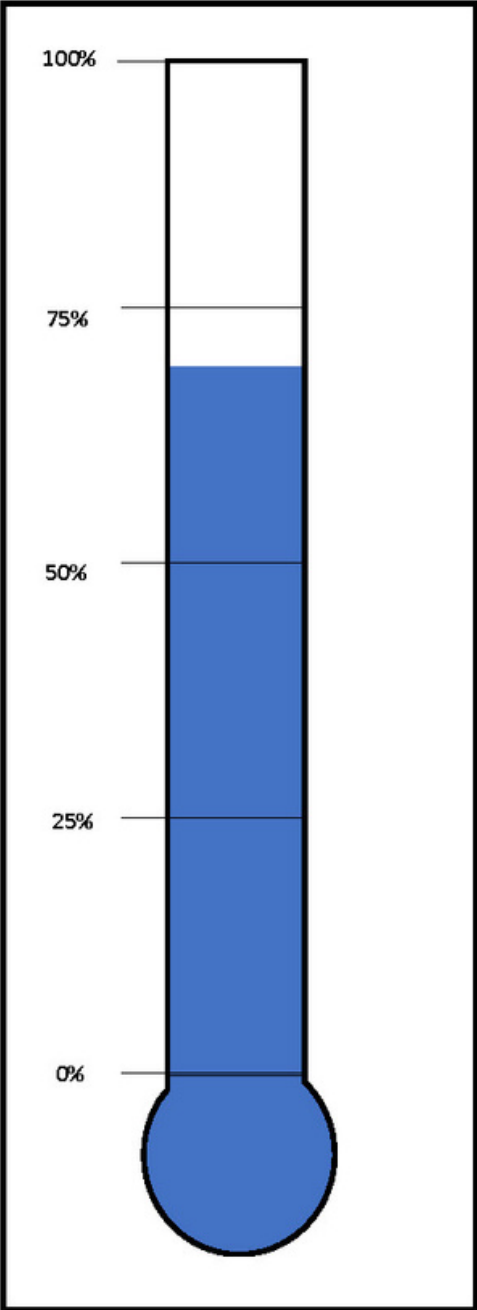
Currently, the two organizations operate out of five buildings, stretching budgets thin. The Sol Center will combine the services and operations of FIRC and Building Hope. Cost savings - **estimated at \$200,000 annually** - will go directly back to the community in the form of rental, utility, medical, and mental health assistance.



Care. Collaboration. Community.



Fundraising Status



\$11,873,935	Fundraising Goal
\$8,483,460	Current Status
\$77,960	Community Donations
\$250,000	Centura - St. Anthony Summit Hospital
\$1,000,000	Dudick Family Foundation
\$50,000	Summit Foundation
\$328,000	Summit County Government
\$500,000	FIRC & Building Hope Board of Directors
\$2,469,500	FIRC Contributions
\$3,808,000	In-Kind Contributions
	Town of Breckenridge
	Rockridge Building Company
	Allen Guerra Architecture
	Jack Wolfe, Realtor
	IBD Design Studio

SUMMIT DAILY

SUNDAY, JUNE 26, 2022

SUMMITDAILY.COM | FREE

Sol Center at Alta Verde gets \$1M

On Saturday, June 25 at the future location of the Sol Center at Alta Verde, from left to right, stand Executive Director of Building Hope Jennifer McAtamney, Mike Dudick, Anna Dudick, Henry Dudick, Brianne Snow, executive director of the Family & Intercultural Resource Center. Mike and Anna Dudick donated \$1 million to the building of the Sol Center at Alta Verde.

DAVID CUDD/COURTESY PHOTO

Donation, 3

Sol Center

Sol Center at Alta Verde Care. Collaboration. Community. FIRC and Building Hope are committed to meeting the community's most pressing needs and together, will...

FIRC Summit FIRC /

Timeline

June 2022

Lease signed with Town of Breckenridge

July 5, 2022

Final Hearing w/ the Planning Commission

Late July 2022

Plans go to Town Council for final approval

Late August 2022

Submit engineering plans and construction drawings to Breck Building Department

September 26, 2022
Groundbreaking

Fall 2024
Project completion





Thank you!

BUILDINGHOPE
SUMMIT COUNTY

FIRC Family & Intercultural
Resource Center